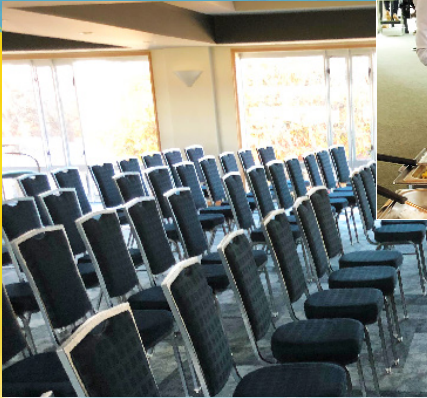


Riccarton Park

CONFERENCES

We make good things happen



So many ways to make your event a success.

Choose our conference centre and you'll enjoy a beautiful parkland setting with a wide selection of indoor venues and outdoor areas. Our facilities can cater for 10 to 400 delegates. For larger conferences, our modern Club Stand offers 17 rooms over three levels. Large indoor exhibition areas combined with free on site parking for over 1,000 cars make Riccarton Park an ideal venue for large-scale corporate or public events. We welcome your enquiry, please call today.

Riccarton Park is an ideal venue for:

- Large conference
- Small conference
- Seminars
- Meetings
- Workshops
- Trade Displays

with all the benefits of Riccarton Park location:

- Quiet, park-like surroundings
- Spacious, attractive gardens
- Good natural light in venues
- Committed catering team
- Free car parking
- 15 minutes from the central city
- 8 minutes to the Christchurch airport
- Close to a variety of accommodation options
- Venues catering from 10 to 400 delegates
- Indoor and outdoor flow

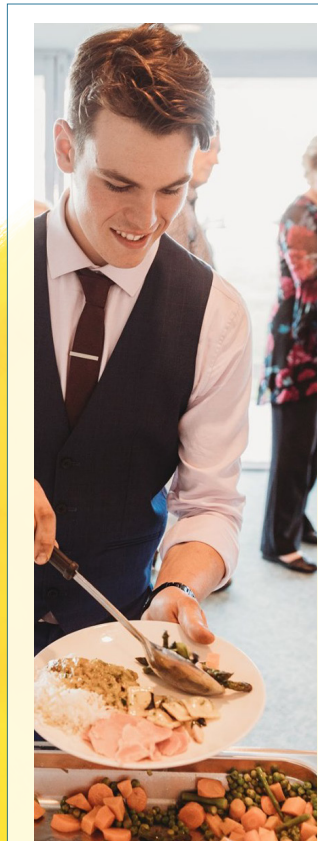
OUR CONFERENCE VENUES WITH MORE

Based on the venue selected, your venue fee includes:

- Room set-up • Registration area • Audio system* • Microphone & lectern*
- Professional service staff • Use of grounds & gardens • Free WiFi

**Microphone & Lectern can be supplied for some rooms.*

**Audio-visual equipment can be hired - see Audio Visual page*



Riccarton Park reserves the right to review beverage or menu prices should your conference or event date fall outside the price validity period stated on our menu or beverage lists.

THE CLUB STAND

The architecturally designed Club Grandstand is the most modern complex at Riccarton Park. It offers three levels of easily accessible rooms with a generous foyer entrance perfect for delegate registration and greeting guests.

There are 17 air conditioned rooms in total, 3 main conference rooms featuring audio equipment varying between 20 and 250 theatre style capacity and, a further 12 break-away rooms ranging between 10-30 seated capacity.



THE SHOW GATE

The delightful, old world charm of The Show Gate makes it an excellent venue for company presentations & dinners, product launches, fashion shows and fundraising events.

With a capacity of up to 400 theatre style, 300 for seated dining or 400 for cocktails, The Show Gate with its dance floor and small stage area lends itself to a variety of entertainment options.



THE PHAR LAP, GLOAMING & BEAUMARIS ROOMS

Located on the 1st floor of the Club Grandstand these rooms are ideal for smaller meetings, committee or board meetings and tribunals.



THE BALMERINO OR NIGHTMARCH ROOMS

Located on the entrance level of the Club Grandstand these rooms are light & spacious, each offering a careful balance of formal and informal features. Each room accommodates up to 250 people theatre style. Linked by a generous foyer, these two rooms combine to provide an ideal venue for clients requiring the convenience of a trade show in conjunction with a conference or cocktail function. Used separately, these rooms are ideal for breakfast meetings, training workshops or product launch.



OUTDOOR AREAS

A variety of areas are available for exhibitions or events requiring an outdoor setting. Riccarton Park's mature trees and grassed areas provide the ideal setting for team building exercises, company sports day or a BBQ.

We make good things happen


Riccarton Park
Functions Conferences Weddings